

# Marking Tubes, Labels and more!

# MAX

## Electronic Lettering Machine

# LETATWIN

## LM-550A/PC

### Professional choice for your cable marking job!

**NEW MODEL**

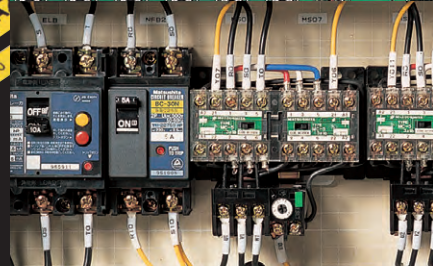
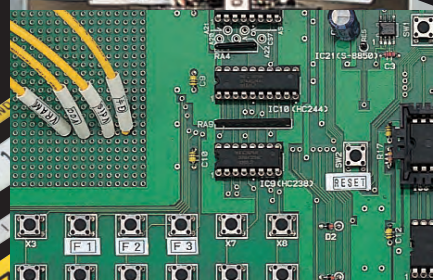


- Our fastest printing speed ever!
- Versatile printing capability!  
(Tube  $\phi$  1.5~8.0mm)
- Connect to your PC with a USB cable or a USB flash drive.

Comes with plastic carry case



The dedicated "LETATWIN PC EDITOR" application software included.



# DEVELOPED FOR MAXIMIZING CABLE MARKING JOB PRODUCTIVITY



## Long consumable roll length

LM-550A/PC adopts the dedicated consumables which have a longer roll length. Long roll length saves reloading time.

LM-IR300B ink ribbon for LM-390A	50 meters
LM-IR50B ink ribbon for LM-550A	110 meters
LM-TP3xxx tape for LM-390A	8 meters
LM-TP5xxW (White) for LM-550A	16 meters

\*LM-TP5xxT (Transparent) and TP5xxY (Yellow) remain as 8meters.

## High-speed marking

LM-550A/PC has an enhanced feeding system that provides you with marking speed at 40mm/second. LM-550A/PC can make approx 52pcs of 20mm-length tube per minute.

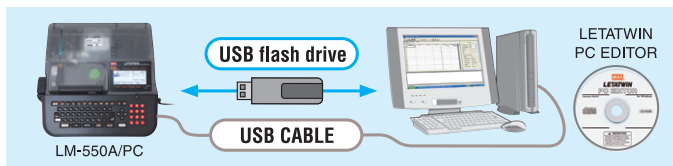
For marking on Tube	Marking time
LM-390A MAX previous model	100
LM-550A	88

**Saving time 12%!!**

## Maximum 250,000 characters built-in large memory storage

## Easy access from your PC with USB

LM-550A/PC features a USB port for a direct cable connection with a WindowsPC (for direct printing or file transfers), and a USB flash drive slot for transferring computer files made in our dedicated "LETATWIN PC EDITOR" software.



## SPECIFICATIONS

ITEMS	CONTENTS
Name	MAX ELECTRONIC LETTERING MACHINE LM-550A/PC
Dimensions	295 (W) × 293 (D) × 94 (H) mm
Weight	2.4kg
Printing method	Thermal transfer method (300dpi)
Display	LCD dot matrix : 64×160 Pixel (Backlit)
Printing speed	40mm/s (Standard) 20mm/s (Low temperature mode)
Maximum Printing length	Tube : 20m, Tape : 5m By multiple copy printing, maximum 30copies, upto Tube ; 100m, Tape ; 7m
Maximum number of characters to input	5,000 characters per file
Character size	1.3, 2, 3, 4, 6mm height
Usable tube	φ1.5mm ~ 8.0mm (PVC tube) (For φ1.5~2.0mm tubes, the dedicated attachment (standard accessory) is required.) φ2.0mm ~ 6.5mm (Heat Shrinkable tube)
Usable tape	Width 5, 9, 12mm (Max genuine tape)
Tube cutting method	Auto half cut, manual full cut
Internal memory	250,000 characters (Maximum 50 files)
External memory	USB memory
Interface	USB 2.0 full speed
Power supply	DC12V, 3.0A <small>Use only specified AC Adapter (100V~240V) included in the package</small>
Power consumption	Max 30W
Operating environment	10°C to 35°C

**PC REQUIREMENTS** For Windows 10 / 8.1 / 8 / 7 operating systems. Windows® is a registered trademark of Microsoft Corporation (US) in U.S.A. or other countries.

The specifications and design of the products in this catalogue will be subject to change without advance notice due to our continuous efforts to improve the quality of our products.



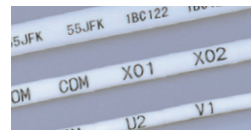
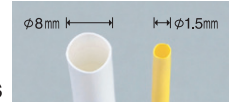
## MAX CO., LTD.

6-6, NIHONBASHI, HAKOZAKI-CHO, CHUO-KU, TOKYO, JAPAN  
PHONE: 81-3-3669-8131 FAX: 81-3-3669-7104  
Web: <http://www.max-ltd.co.jp/int/>

## Versatile marking capability

Various marking media and sizes

- φ1.5~φ8.0mm PVC tubes
- φ2.0~φ6.5mm Heat Shrinkable tubes
- 5mm/9mm/12mm wide MAX dedicated tapes

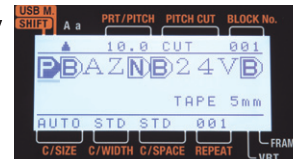


- I.D. plates
- Oval tubes \*For the availability of European style marking media, please contact our distributor.

To optimize printing quality, multiple combinations of settings (such as vertical/horizontal print positions and print density) can be saved to support European style marking media etc.

## Large and backlit LCD display

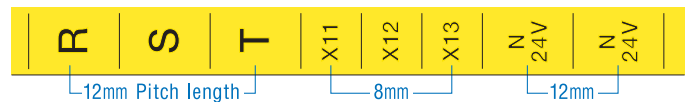
Backlit LCD display makes your confirmation of input contents easy, even if you work in a dim jobsite.



## The pitch can be set up to maximum 60mm.

Marking on tape : 4 up to 60mm

Marking on tube : 10 up to 60mm (Auto pitch function is available for more than 60mm)



## Economical refill-type ink ribbon.



## PRINTER SUPPLIES and MEDIA

<b>INK RIBBON CASE</b> LM-RC500	20PCS/CTN	<b>UL RECOGNIZED TUBE</b> LM-TU332N2 WHITE	1ROLL/BOX φ3.2mm × 100m/ROLL
		LM-TU336N2 WHITE	φ3.6mm × 100m/ROLL
		LM-TU342N2 WHITE	φ4.2mm × 80m/ROLL
		LM-TU352N2 WHITE	φ5.2mm × 80m/ROLL
<b>ECONOMICAL INK RIBBON REFILLS</b> LM-IR50B (BLACK)	10 ROLLS/BOX 110m/ROLL	<b>MAX HIGH QUALITY TUBE</b> LM-TU432L WHITE	1ROLL/BOX φ3.2mm × 200m/ROLL
		LM-TU436L WHITE	φ3.6mm × 200m/ROLL
		LM-TU442L WHITE	φ4.2mm × 200m/ROLL
		LM-TU452L WHITE	φ5.2mm × 135m/ROLL
<b>INK RIBBON REFILLS FOR HEAT SHRINKABLE TUBE</b> LM-IR50BP (BLACK)	10 ROLLS/BOX 110m/ROLL	LM-TU464L WHITE	φ6.4mm × 100m/ROLL
		LM-TU480L WHITE	φ8.0mm × 70m/ROLL

## TAPE CASSETTE

LM-TP505W (WHITE)	5mm(W) × 16m(L)/PC
LM-TP505Y (YELLOW)	5mm(W) × 8m(L)/PC
LM-TP505T (TRANSPARENT)	5mm(W) × 8m(L)/PC
LM-TP509W (WHITE)	9mm(W) × 16m(L)/PC
LM-TP509Y (YELLOW)	9mm(W) × 8m(L)/PC
LM-TP509T (TRANSPARENT)	9mm(W) × 8m(L)/PC
LM-TP512W (WHITE)	12mm(W) × 16m(L)/PC
LM-TP512Y (YELLOW)	12mm(W) × 8m(L)/PC



Distributor: